



PRESENTING A DROP OF DELIGHT
AMIDST AN OCEAN OF COMFORT.





A PIONEER IN CREATING ARCHITECTURAL MASTERPIECES.

Mount Housing is amongst Coimbatore's most outstanding real estate conglomerates. Best known for their fabulous residential and commercial properties across the length and breadth of the city, Mount Housing has been truly successful in spreading a smile across hundreds of delighted customers in its every creation. Apart from continually delighting customers with artful aesthetics, innovative design, cutting-edge technology and the latest construction standards, what's really winning hearts for the real estate legend is the company's core-values of trust, reliability and transparency.

Member: **CREDAI**



A MAGICAL CONFLUENCE OF ART, NATURE, AESTHETICS & CUTTING-EDGE DESIGN

Raindrop is a signature luxury project from Mount Housing. Beautifully nestled at Nehru Nagar on Kalapatti Road amidst the most renowned schools, colleges, hospitals and IT parks, Mount Raindrop features 120 absolutely green & vastu compliant magnificent 1, 2, 3 & 4 BHK homes ranging between 700 & 2,500 sq. ft. spread over an expanse of 2.15 magnificent acres. What makes every home at Raindrop a stunning success is its artful incorporation of nature's elements and aesthetic architectural genius, seamlessly blended with a host of superior amenities. So be it an exclusive 10x10 feet botanical balcony featuring drip irrigation, a lush-green 50% open area across the project or refreshing springs, water spouts, magical fountains, every home at Raindrop is a perfect blend of eternal luxury, comfort and delightful enchantment.





WELCOME TO AN ABODE THAT LOVES NATURE AS MUCH AS YOU DO!

Mount Housing has always been an environmentally conscious real-estate developer creating world-class homes that provide a healthy sustainable and affordable lifestyle to all its residents. On completion, the Jade Block at Mount Royale will be among the country's first 5 SVA GRIHA (Small Versatile Affordable Green Ratings for Integrated Habitat Assessment) rated green residential buildings with a much coveted Four Star certification.

We are going one better with RainDrop, which has been registered towards gaining the Indian Green Building Council's Green Homes Rating. RainDrop is an aspiring IGBC Green Homes Gold Certified development.

IGBC Green Homes certification is something that consumers can look for to readily identify homes that have been third-party inspected, performance-tested and certified as truly green homes that will perform better than standard homes.



A Green Home can have tremendous benefits, both tangible and intangible. The immediate and most tangible benefit is in the reduction in water and operating energy costs right from day one, during the entire life cycle of the building. The most tangible benefits are the reduction in water and energy consumption right from day one of occupancy. Green Homes rating system can also enhance resale value of a home.

TANGIBLE BENEFITS

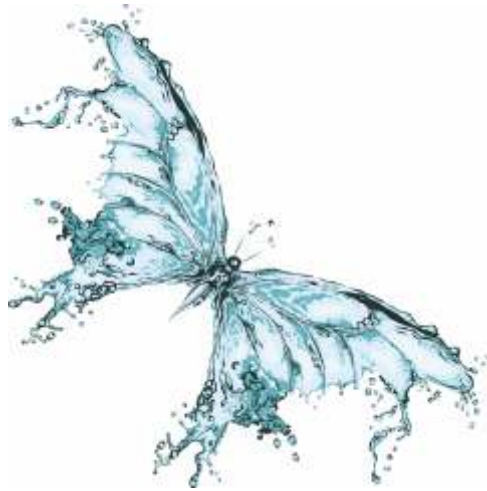
Energy savings: 20 - 30 % | Water savings : 30 - 50%

INTANGIBLE BENEFITS

Enhanced air quality | Excellent day lighting | Health & well being of the occupants | Conservation of scarce national resources | Reduced greenhouse gas emissions Fewer problems with mold, mildew and other indoor toxins
Visit www.igbc.com for more details







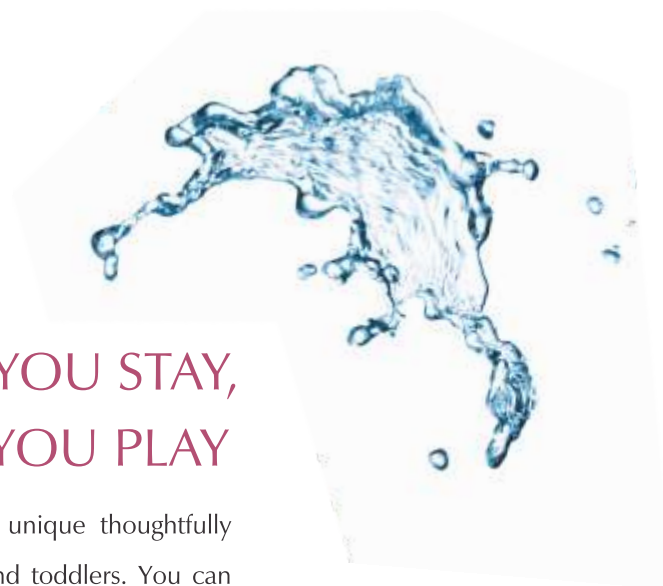
WELCOME HOME, IT'S WHERE YOUR HEART & MIND WILL ALWAYS WANT TO BE!

A home at Mount Raindrop is a magnificent spectacle that'll enchant your senses in innumerable ways through each day. Be it the joy of being in the perfect location or a home created using top-of-the-line materials that will stand the test of time. Each home is a heavenly retreat thanks to the breath-taking water bodies that add splendor to every home. The homes at Mount Raindrop also feature an array of facilities that make eachday an absolute dream.

water treatment plant | covered car parking | separate rest area for drivers and domestic helpers | 24 hour security and video door phones | 24 hour generator backup services fiber optic connectivity and lots more

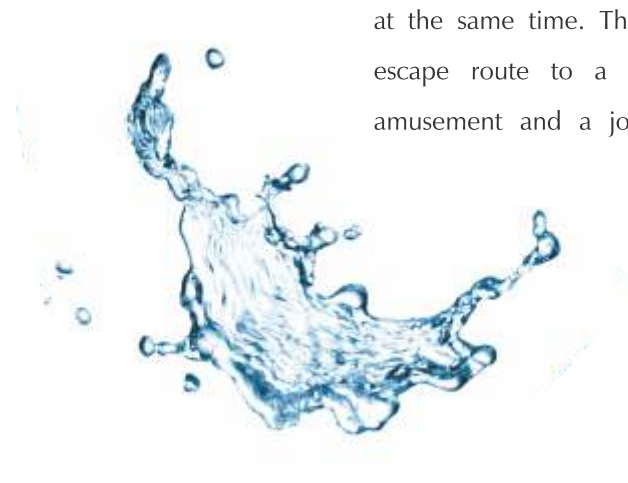






STAY WHERE YOU STAY, PLAY WHILE YOU PLAY

Mount Raindrop features a unique thoughtfully created play area for kids and toddlers. You can ensure your kids are outdoor having fun while staying within the comfort of your home at the same time. The kids area is the perfect escape route to a new world of creativity, amusement and a jolly time with other kids.

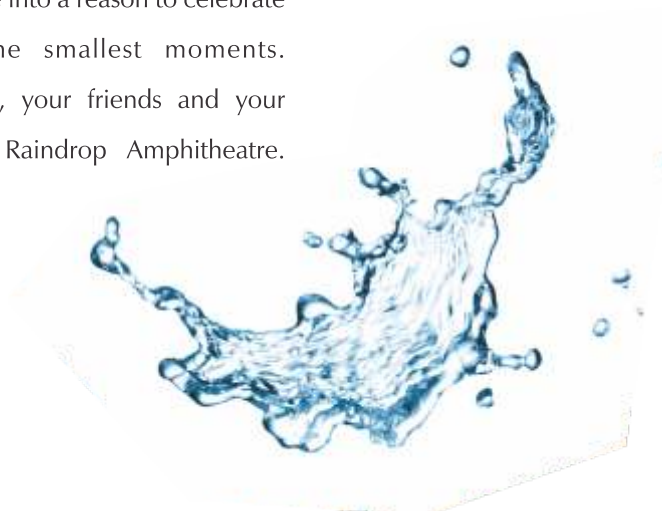






MAKE A SHAKESPEARE VERSE COME ALIVE

Host a play, project a movie, plan out a weekend.
This is your ultimate spot at Mount Raindrop to get
together! Turn an excuse into a reason to celebrate
life's biggest and the smallest moments.
Good times await you, your friends and your
family at the Mount Raindrop Amphitheatre.





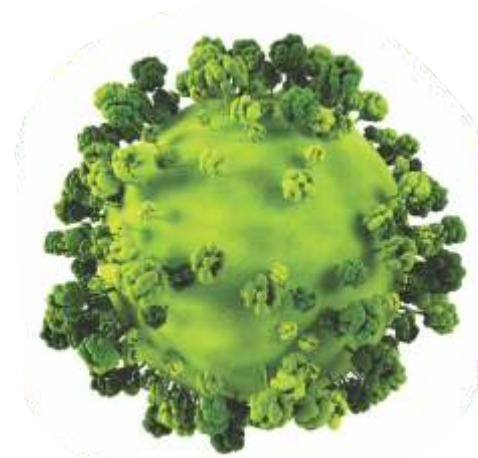


DIVE INTO A BRAND NEW DAY!

What's more refreshing than taking a dip in the pool every morning? Or swimming and catching up with the sun while it's going down at dusk. Amongst the host of amenities that Mount Raindrop features is a beautiful swimming pool you can wake up to. The swimming pool also features a separate toddlers pool that's safe and let's even the little ones have a blast amidst the cerulean blue waters.

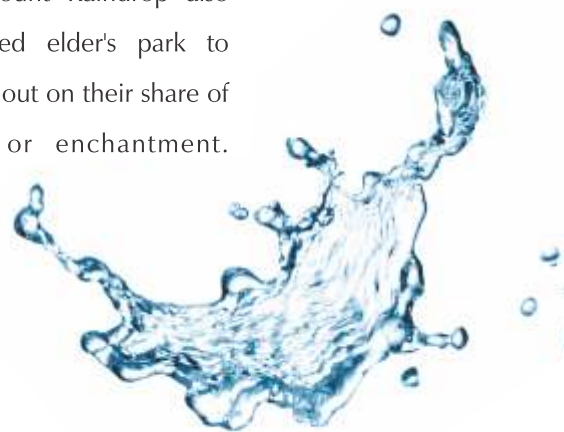




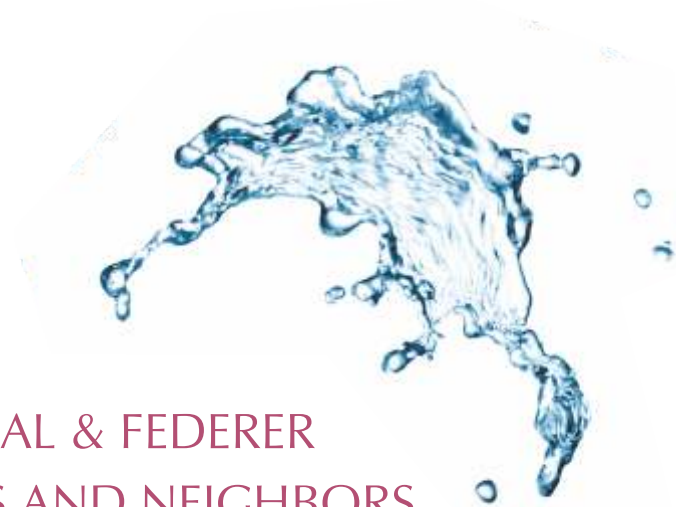


LUSH OF GREEN AND A PLUSH OF BLUE

Every home at Mount Raindrop enjoys an expanse of 50% open area. This luscious lawn-space with water-bodies and magical fountains all around is bound to transcend you into a world of your own. To top it up, Mount Raindrop also features an exclusive 10x10 feet botanical balcony powered by 'drip irrigation' so you have a tropical garden within your own home. So be sure that you have all the time, space and mind in the world to feel at home. Mount Raindrop also features a specially designed elder's park to ensure your elders don't miss out on their share of exercise, entertainment or enchantment.

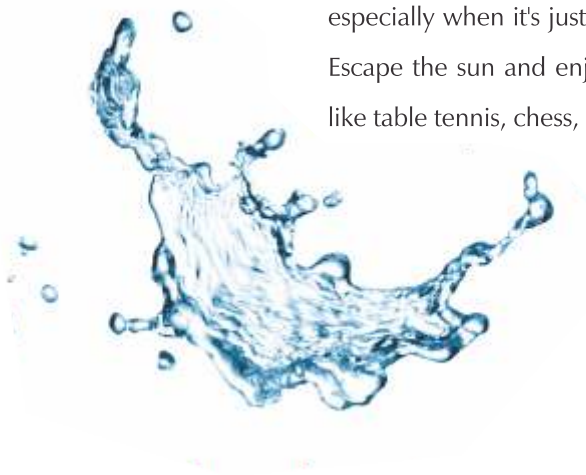






PLAY NADAL & FEDERER WITH FRIENDS AND NEIGHBORS

Pick up your racket, pitch in the pacer, flush out some adrenaline. Make Wimbledon come alive at your very own Tennis Court at Mount Raindrop with your family and friends. There's nothing like some time for sport after a long day at work, especially when it's just a hop, skip & jump away! Escape the sun and enjoy a host of indoor games like table tennis, chess, carrom and so much more.

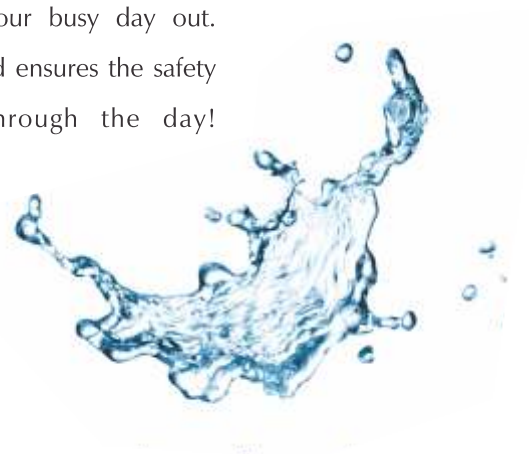






YOUR BABY'S DAY IN

Leave your worries behind and drop your kids off at the creche. Carefully designed to ensure your child has a ball on your busy day out. It is absolute fun, learning and ensures the safety of your little one all through the day!







SPECIFICATIONS



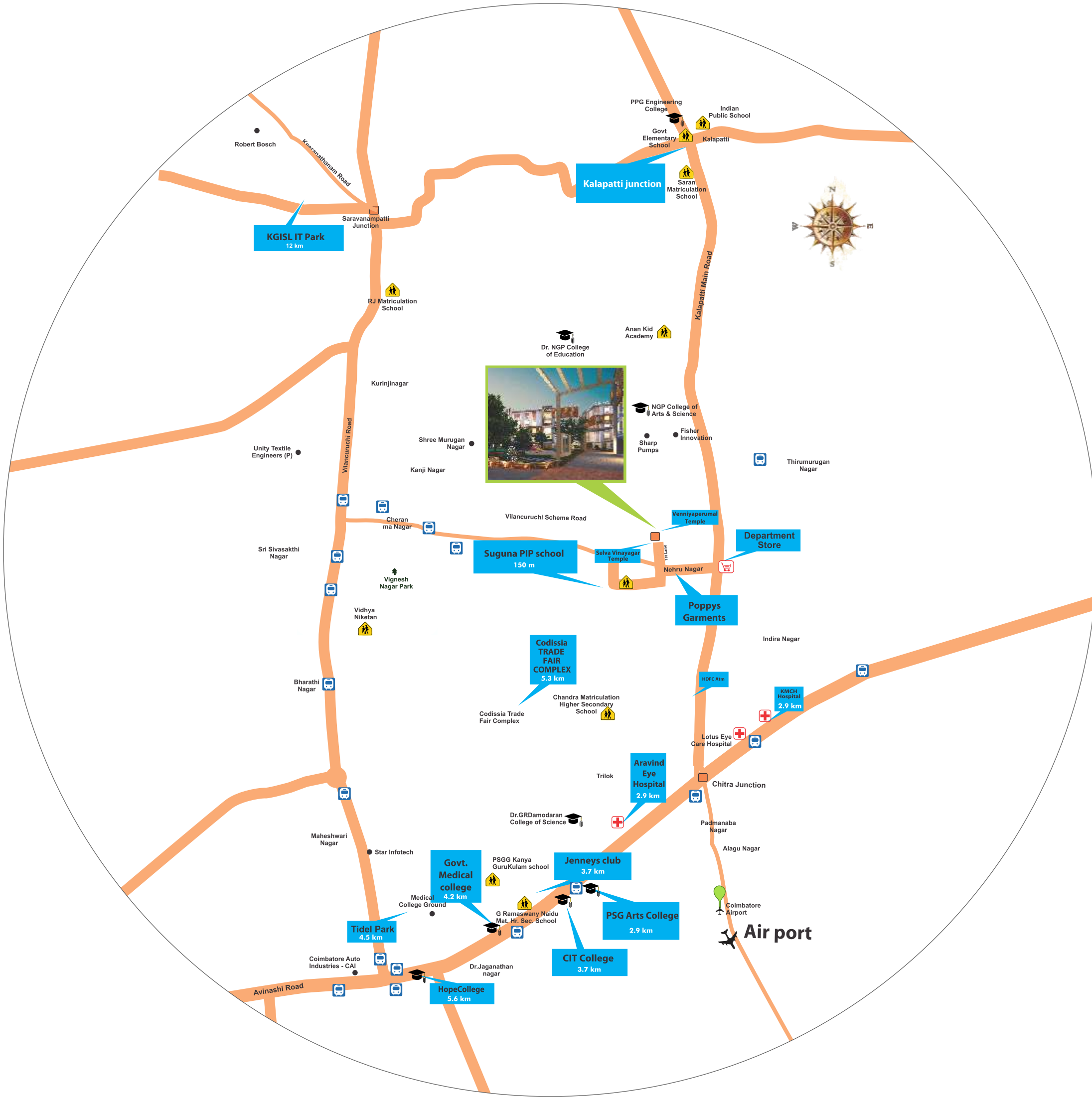
STRUCTURE:	RCC Framed structure.
EXTERIOR WALLS:	Weather shield emulsion Paint.
WALL FINISH:	Interior wall surfaces with two coats of wall putty, primer and two coats of paint.
FLOORING:	Vitrified tiles for all rooms. Ceramic tiles for Balcony, Kitchen, Wash and Bathrooms. Granite/Vitrified/ Ceramic tiles for the club house and common area.
BATHROOM:	Designer tiles up to ceiling height. Branded sanitary fittings and CP fittings - Kohler or equivalent.
DOORS & WINDOWS	
ENTRANCE DOOR:	8’ tall Melamine polished designer door.
INTERIOR DOOR:	8’ tall Spray painted seasoned hard wood frame with Skin / flush doors.
WINDOWS:	Extra large UPVC with MS safety grills.
KITCHEN:	Polished granite slab for kitchen counter top upto 12' length with stainless steel sink. Wall above the counter will be tiled with designer glazed wall tiles up to 2' height.
ELECTRICAL:	Three phase power supply with DB/MCB. Concealed wiring using Finolex or equivalent make. Modular switches. Sound Proof generator for common area and 750W backup power for each flat.
WATER SUPPLY:	Treated water for a healthy living with generator backup and pressure pumps.



Amenities

- 100 Seating Open Air Theatre with green room
- Dedicated Landscaped Elders Seating Area
- Extensive water bodies and fountains
- Terraced Garden for each flat with Plants / trees with drip irrigation to improve the aesthetes of home.
- Tennis Court
- State of the art - Swimming pool / Toddler pool
- Fully equipped air conditioned health club with gym / steam / Jacuzzi
- Air conditioned Mini Theatre
- Air conditioned Community Hall
- Indoor Games Room
- Children play area with Nanny's Shelter
- Individual entrance lobby to the towers with Italian / granite flooring
- Creche Care
- Centrix facilities to augment the 24 hour Security at the campus
- CCTV Security system connected to each flat and security
- Solar water heater connected to one bathroom per flat
- Reticulated Piped Gas connection for each flat
- Water Softening plant for all water supplies & individual RO for the flats in kitchen
- Sewage treatment plant
- Rain Water Harvesting
- Generator Back-up of 750 W for each flat
- Provision of TV cable and Broadband facility
- 24 Hrs generator backup for common facilities
- Fully Automatic V3F 8 Passengers Lift for each block
- Common Driver / Servant Rooms & Bathrooms







MOUNT HOUSING & INFRASTRUCTURE LIMITED,
NO.154, Race Course Road, Coimbatore - 641 018,
Call: +91 422 - 4533 111 | Mobile: +91 93446 33111
www.mounthousing.com | marketing@mounthousing.com

PARTNERS

ARCHITECT - WHITEINK | GREEN BUILDING - Y.T ENTERPRISES
PMC - MATRIX SOLUTIONS | PLUMBING - PRISM | ELECTRICAL - PPS

This brochure is purely conceptual and does not constitute a legal document. Visuals, representations including photographs and art renderings portray artistic impressions only and are not to be taken as representations of fact and do not form part of an offer or contract. The information contained herein, features and specifications should not be relied upon as accurately describing any specific matter, as they are for general guidance only and may vary from time to time. Floor and Land areas are approximate measurements and are subject to final survey. The management of Mount Housing reserve the right to add, delete or alter any specifications mentioned here.